

Sepialine Print Tracking for Macintosh 6.2 Quick Start Guide



Sepialine Incorporated
114 Sansome Street
Suite 920
San Francisco
California, USA 94104

Table of Contents:

Overview.....	1
System Requirements:	1
Installing the Server Components	2
Installing Sepialine Print Tracking for Macintosh.....	5
Tracking Classic Printers	5
Configuring Sepialine Print Tracking for Macintosh	6
Creating a Pre-Configured Install Package.....	6
Installing The Sepialine Dashboard Widget	7

*Copyright © 2005 Sepialine Incorporated.
114 Sansome Street Suite 920, San Francisco, CA 94104
All Rights Reserved.*

*Revision 6.2.30
Printed on 11/9/2005*

No part of this documentation may be stored in a retrieval system, transmitted or reproduced in any way, except in accordance with the terms of the applicable software license agreement. This documentation contains proprietary information of Sepialine Inc., and/or its suppliers.

Trademark Acknowledgements

Sepialine, Argos, Sepialine.com, the Sepialine logo and the Argos logo are trademarks of Sepialine Inc. All other trademarks referenced are the property of their respective owners.

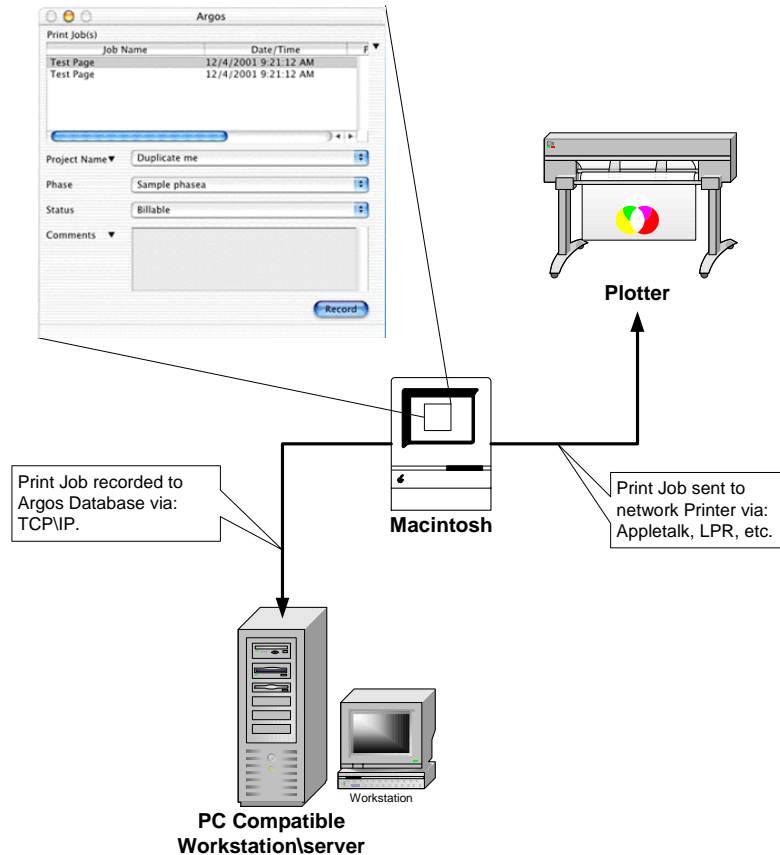
Overview

Sepialine Print Tracking for Macintosh allows mixed network environments (PC & Mac) to deploy a unified print tracking system and maintain a single database for reporting and management.

To install this component, you'll need access to your current Sepialine Database Server (or the target machine for your Sepialine Database Server) and all of the Mac workstations you wish to track.

For pure Macintosh environments the Sepialine Print Tracking for Macintosh client will require that at least one PC reside on your network. This PC will house the Sepialine Database and Sepialine Manager that will be used to store collected print activity data and run reports. This PC does not need to play an integral role in your network environment.

The following is a schematic of how the Sepialine Print Tracking for Macintosh client functions on a network and reports print activity to a centralized database.



System Requirements:

- IBM Compatible PC running Windows 2000 Professional or Server, Windows 2003 Server or Windows XP Professional
- 256 Mb RAM
- PIII 800Mhz or greater
- Internet Information Server 5.0 or above
- Microsoft .NET
- Macintosh OS X 10.3+

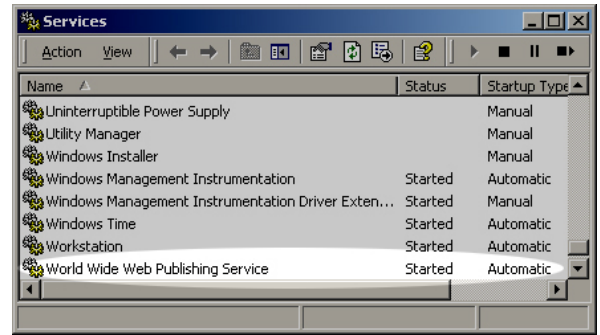
Step Overview

- I. Verify Microsoft Internet Installation Services (IIS) are Installed (if not, install)
- II. Verify the Microsoft .Net Runtime is installed (if not, install)
- III. Verify Sepialine Web Service is installed (if not, install)
- IV. Install Sepialine Print Tracking for Macintosh Clients

Installing the Server Components

I. VERIFY MICROSOFT IIS IS INSTALLED

1. Open your 'Service Control Manager'
 - Start>Settings>Control Panel>Administrative Tools>Services
2. Find the 'World Wide Publishing Service'.
3. Start the service and set to 'Automatic'.
4. Verify that this service is functioning – Open Internet Explorer 5 or greater and go to the following URL:
 - `http://localhost`
5. If you are presented with a website, your local web server is running.



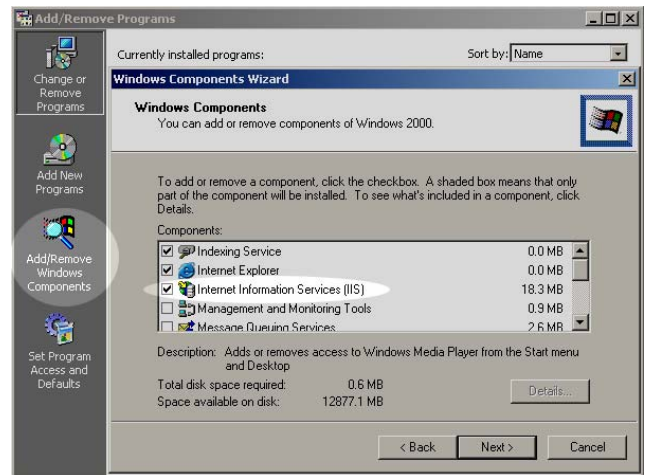
II. VERIFY MICROSOFT .NET RUNTIME IS INSTALLED

Once you have verified the presence and functionality of IIS you will need to install the .NET framework on this machine. The .Net framework may be thought of as a service pack, updating your Windows operating system with the latest runtime. If your system contains a `C:\%WINDIR%\Microsoft.NET\Framework\v1.1.4322` directory, Microsoft .NET is already installed.

If you do not have the .NET installation file, you can find it at

<http://www.microsoft.com/downloads/details.aspx?FamilyID=262d25e3-f589-4842-8157-034d1e7cf3a3&displaylang=en>

1. Browse to, and run, the `dotnetfx.exe` file. Follow the prompts.



NOTE: IIS MUST BE INSTALLED BEFORE INSTALLING THE .NET RUNTIME.

III. VERIFY ARGOS WEB SERVICE IS INSTALLED (IF NOT, INSTALL)

1. If you have not previously installed the Sepialine Web Service, or it is not listed in the Windows Add/Remove Programs control panel you will need to install it as follows:

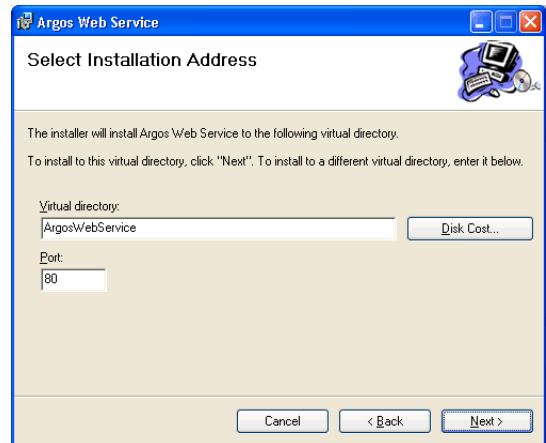
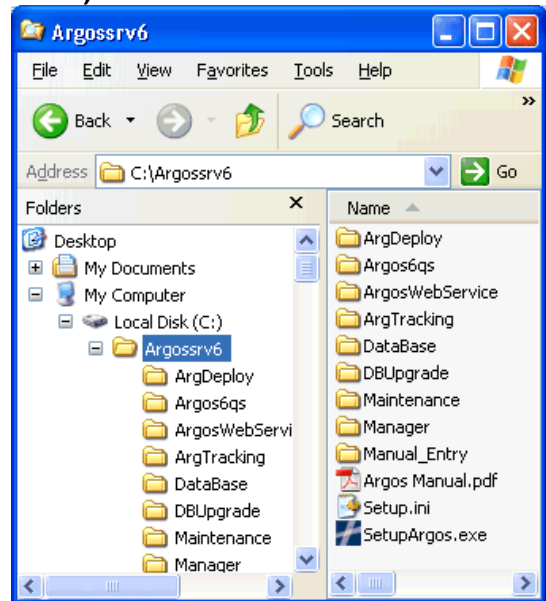
From the Windows Server Database machine browse to, and run, the file

`Argosrv6\SetupArgos.Exe`

2. Select the 'Tools and Utilities' link in the Sepialine Installer Launcher and then click on the Argos Web Service link to start the web service installation.

3. Follow the prompts to install the Argos Web Service on the local machine. The default location of this install is

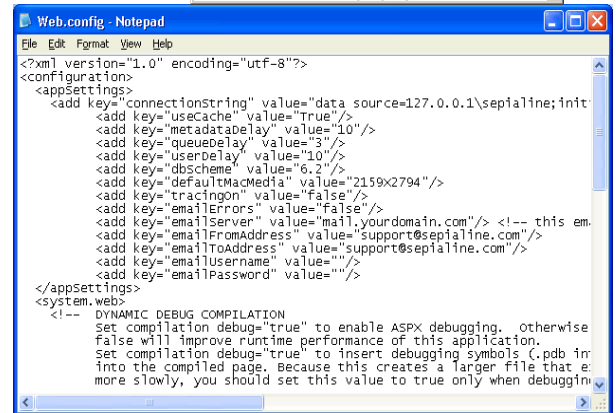
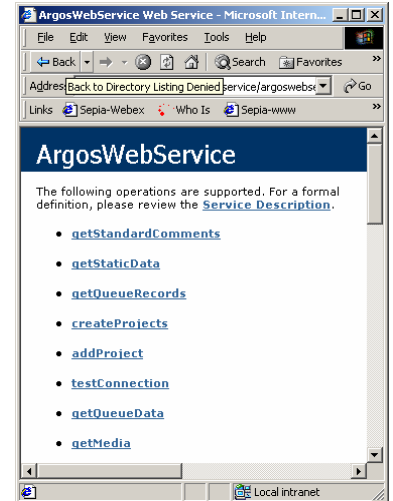
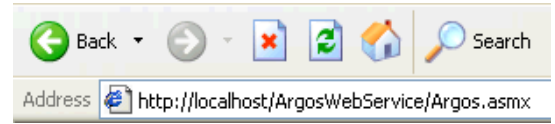
`C:\inetpub\wwwroot\ArgosWebService`



4. Test the success of the installation – Open Internet Explorer (IE) and go to the following address on the local machine
 http://localhost/argoswebservice/argos.asmx
5. You should be presented with the ArgosWebService website which now runs on this machine. This website should be accessible from all Macintosh computers via Internet Explorer using the computer name.
6. You can now optionally configure the Argos Web Service to send you emails if a user prints to an unrecognized paper size. Make a backup of
 \inetpub\wwwroot\ArgosWebService\web.config and then open the file in notepad.

NOTE: IF YOU ARE NOT COMFORTABLE EDITING CONFIGURATION FILES THAT MIGHT AFFECT YOUR TRACKING, SKIP THIS STEP

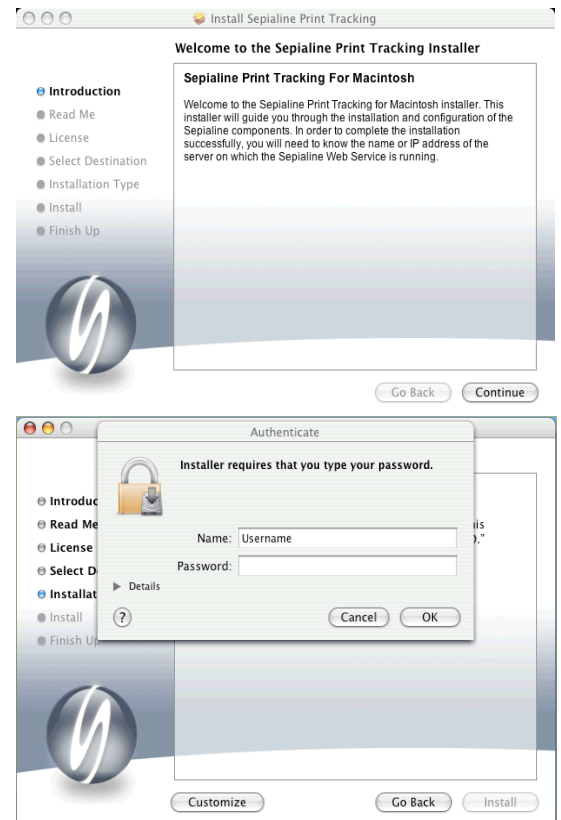
7. Change the 'emailErrors' setting to a value of 'true'
8. Change the 'emailServer' setting to the address of your mail server. Note that your mail server must accept emails from external applications.
9. Change the 'emailFromAddress' and 'emailToAddress' settings to values that make sense for your organization
10. Change the 'emailUsername' and 'emailPassword' settings if necessary
11. Save the file and exit



IV. INSTALLING THE MAC CLIENT

Installing Sepialine Print Tracking for Macintosh

1. Double click on the Sepialine.mpkg installer to start the installation.
2. Click the continue button on the following screens, and click the Agree button to agree to the license agreement
3. Select the drive that you want to install Sepialine Print Tracking onto. Note that this *must* be the same drive that contains the OS X operating system files. Click the Continue button to proceed.
4. Click the install button to install the software and authenticate as an administrator to complete the install.
5. When the install is complete, if this was a clean install rather than an upgrade and did not ship with pre-configured preferences files, the Sepialine Preferences screen will be displayed.



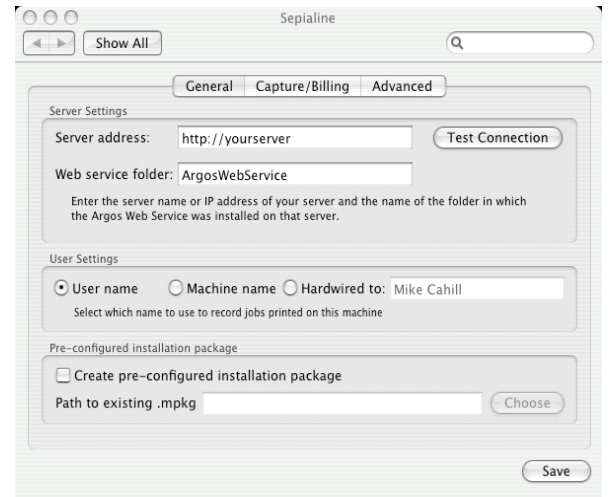
Tracking Classic Printers

Sepialine Print Tracking For Macintosh 6.2 automatically tracks printing from Classic applications to OS X printers. If you want to track printing from Classic applications to printers configured in the Classic environment, you must enter the path to the Classic system folder in the Sepialine Preferences. If you change this setting, you will need to reboot the machine before native Classic printing will be tracked.

NOTE THAT WITH RELEASE 6.2, SEPIALINE NO LONGER PROVIDES TRACKING COMPONENTS AND A BILLING INTERFACE FOR USE IN MACINTOSH OS 9. HOWEVER PRINTING FROM CLASSIC APPLICATIONS TO OS X OR NATIVE CLASSIC PRINTERS IS SUPPORTED.

Configuring Sepialine Print Tracking for Macintosh

1. You will find the Sepialine Preferences in the System Preferences application
2. Enter the name or IP address or name of the server running the Argos Web Service in the 'Server address' field
3. Change the name of the 'Argos web service folder' field if you changed the virtual directory setting when you installed the Argos Web Service.
4. Click the 'Test Connection' button to ensure the web service can be contacted
5. Click the 'Save' button and authenticate as an administrator to save the settings

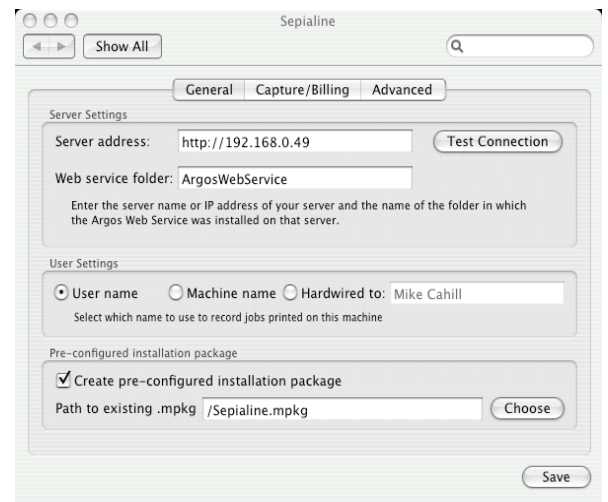


The Sepialine Desktop Billing Client should be launched a few seconds after closing the Sepialine Preferences. Try making a test print to ensure that print capture is working – the unbilled print job should appear in the Sepialine Desktop Billing Client.

Creating a Pre-Configured Install Package

The Sepialine Preferences application can take the settings from an existing, working installation and apply them to an install package so that you can install on the rest of your machines without requiring further configuration. You can also deploy this installation package remotely using Apple Remote Desktop. These instructions assume the tracking is working on the machine you are working on.

1. You will find the Sepialine Preferences in the System Preferences application
2. Check the 'Create pre-configured installation package' check box
3. Browse to a copy of the Sepialine.mpkg file
4. Click the 'Save' button and authenticate as an administrator
5. A window will be displayed informing you where you can find your pre-configured installation package
6. Copy this package to the other machines that you want to install tracking on and run it or push it to the machines using Apple Remote Desktop. Sepialine tracking will be pre-configured and will start automatically



Installing The Sepialine Dashboard Widget

The Sepialine Dashboard Widget integrates with the OS X 10.4 Dashboard and allows administrators to monitor the Sepialine unbilled print queue. Administrators can also move unbilled items to the billed table in the database using this widget.

NOTE: THIS WIDGET SHOULD ONLY BE INSTALLED ON MACHINES USED BY ADMINISTRATORS AS IT ALLOWS THE USER TO MANIPULATE THE UNBILLED DATA IN THE SEPIALINE DATABASE

1. Double-click the SepialineDashboard.wdgt file and click the 'Install' button.
2. Click the 'Keep' button
3. Click on the 'i' button at the bottom right corner of the widget
4. Enter the server name or IP address of the machine running the Argos Web Service and click the 'Done' button



5. The Sepialine Dashboard Widget should now be running. Click the 'Refresh' link to update the data

